

# DuraNautic

## DuraFish

*A timeless watercraft for  
a lifetime of memories*

### Fish Your Heart Out!

A day on the water just got better with the all new DuraFish. Built solid and outfitted perfectly, this hand-crafted machine will take your fishing experience to the next level. The DuraFish offers a spacious fishing platform with plenty of storage in an affordable, easy-to-trailer, easy-to-run modern fishing boat.

### Standard Features

- Stainless steel ski eyes
- All aluminum interior frame
- Aluminum flooring with textured non-skid paint
- Bow mooring cleat
- Heavy duty bow and stern castings
- Two or more pedestal fishing seats with four bases
- Lockable bow storage compartment
- Latching waterproof hatch covers
- Portside Bow aerated livewell
- Bilge pump
- Navigation lights with storage clips
- Trolling motor receptacle
- Two 12V Trolling motor Battery Trays
- Rod storage
- Storage for two 6 gallon fuel tanks
- Aluminum Dash Console with switch panel

The DuraFish is available in Black, Insignia Blue, Burgundy, Hunter Green, and Seafoam.

### Also includes all the standard features from DuraNautic V-Hull Models.

- Foam-filled for level floatation.
- Unique structural bulkheads built under floor provide strengthened rigidity.
- Transom drain plug is easily accessible.

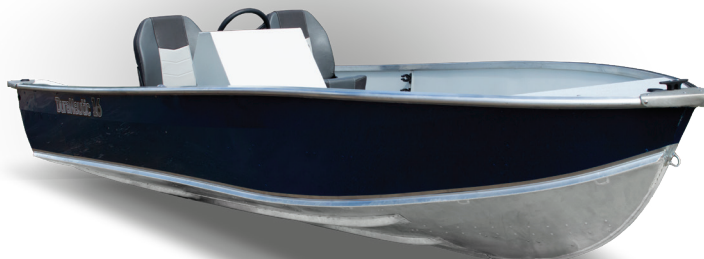
**Fun to run and quick to plane. Our V-models provide the durable strength and performance dealers and boat enthusiasts have come to expect from a DuraNautic.**

DuraNautic boats are manufactured by:



One Grumman Way  
PO Box 549  
Marathon, NY

p 607.849.3211  
f. 607.849.3077  
sales@marathonboat.com  
marathonboat.com



SPECIFICATIONS	
Length	16'
Beam	70"
Depth Amidship	20"
Transom Height	20"
Under-Seat Bulkheads	6
Keels	5
Max. Person Capacity	5
Max. Person Wt. Lbs.	705
Approx. Hull Wt. Lbs.	380
Max. Wt. Capacity Lbs.	1150
Max. HP Capacity	60
Hull Gauge	.080"

